

INTENSIVE REARING OF MONO-SEX NILE TILAPIA AND SILVER CARP UNDER MONO-OR POLY CULTURE SYSTEMS AT DIFFERENT STOCKING DENSITIES IN FLOATING NET CAGES

Abdelhamid, A. M.

Dept. of Animal Production, Fac. Agric., Mans. Univ., A.R.E.

ABSTRACT

The experiment of this study was carried out for 6 months on rearing Nile tilapia and silver carp, whether under monoculture or polyculture at different stocking densities. Four floating net cages (10 x 10 x 3 m) were used. The obtained results revealed that the best treatment was the monoculture of all males mono-sex Nile tilapia (10000 fish of 10-g each/cage) followed by that of polyculture (5000 tilapia of 10-g plus 750 carp of 70-g/cage) concerning their superiority in final bodyweight (235 and 545-g/fish), bodyweight gain (225 and 475-g/fish), average daily bodyweight gain (1.21 and 2.55-g), specific growth rate (SGR, 1.70 and 1.01 %/day), feed conversion ratio (FCR, 2.41 and 2.45), feed cost/Kg bodyweight gain (7.78 and 5.89 L.E.), and economic efficiency (144.5 and 77.9%, respectively). Moreover, the monoculture of all males mono-sex Nile tilapia was also the best treatment in return (18855 L.E./cage) followed by the polyculture treatment (7500 tilapia of 10-g with 1100 carp of 70-g/cage) which gave return of 10868 L.E./cage.

Keywords: Cages – Nile tilapia – Silver carp – Stocking rates – Performance – Productivity.

INTRODUCTION

Frankic and Hershner (2003) summarized the benefits of aquaculture in: 1) increase household food supply and improve nutrition, 2) increase household economy through diversification of income and food sources, 3) strengthen marginal economy by increasing employment and reducing food price, 4) improve water resource and nutrient management at household or community levels, 5) preserve aquatic biodiversity through restocking and recovering of protected species, 6) reduce pressure on fishery resources if done sustainable, 7) improving/enhancing habitats, 8) stimulates research and technology development, and 9) increase education and environmental awareness. El-Saidy (2005) recommended mono-sex culture of male Nile tilapia for its better growth performance and economics. Abou Zied and Hassouna (2006) concluded that growth performance of sex reversed Nile tilapia tended to decrease as its stocking rate increased, but feed conversion rate showed contra results. Abo-El-Wafa (1996) stated that tilapia cage culture is productive (~28.1 kg/m³/5 months) and economically feasible when scientific management, using suitable tilapia species and size stocked early at optimum numbers and fed with suitable diet. Moreover, Coulibaly *et al.* (2007) mentioned that production potential of African catfish (*Heterobranchus longifilis*) from floating cages could be increased by the improvement of rearing conditions (feeding systems, culture management) as

noted in other species. The aim of the present work was to estimate the benefits of fish (Nile tilapia and silver carp) culture whether under mono-or polyculture systems, particularly at two stocking rates in floating net cages.

MATERIALS AND METHODS

This study was carried out at Al-Manzalah lake (Raswah Lisa Al-Gamaliah) using four floating net cages (10x10x3 m each) for six months (1st May till 30th October 2010). All fish groups were fed on the same diet that contains 25% crude protein (from Al-Schorok Feed Mill, Al-Matariah, Dakahliah governorate) and offered twice daily (at 8.30 a.m. and 15.00 p.m.) at 3% of body weight mass daily. All fish species (all male mono-sex Nile tilapia, *Oreochromis niloticus*, Linn. and silver carp, *Hypophthalmichthys malitrix*, Val.) were purchased from Hatchery and Fish Farm of Yosef Asal at the same district (Raswah Lisa Al-Gamaliah). The following schema illustrates the rearing system:

| Item | 1 st Treatment | 2 nd Treatment | 3 rd Treatment | 4 th Treatment |
|--------------------------|--------------------------------|---------------------------|--|--|
| Fish species | All male mono-sex Nile tilapia | Silver carp | All male mono-sex Nile tilapia + Silver carp | All male mono-sex Nile tilapia + Silver carp |
| Fish weight, g | 10 | 70 | 10 +70 | 10 +70 |
| Stocking rate: | | | | |
| Fish/cage | 10000 | 1500 | 5000 +750 | 7500 +1100 |
| Fish/m ³ | 33.3 | 5 | 19.2 | 28.7 |
| Gram fish/m ³ | 333.3 | 350 | 341.7 | 506.7 |
| Rearing system | Mono-culture | Mono-culture | Poly-culture, low stocking rate | Poly-culture, high stocking rate |

Biweekly measurements for 30 fish of each species within each cage were recorded concerning body weight, length, and depth in g and cm, respectively for calculating the condition factor ($K=W/L^3$, where W and L are body weight and length in g and cm, respectively), bodyweight gain (BWG), average daily bodyweight gain (DBWG), specific growth rate {SGR=100 (ln. W_2 -ln. W_1)/days}, gain of body length (BLG) and depth (BDG), average daily body length gain (DBLG), and average daily body depth gain (DBDG). Accumulative feed consumption per cage was calculated for feed conversion estimation. Also, water parameters (temperature, pH, and dissolved oxygen) were estimated morning and after noon, every 3 days for each cage (according to Abdelhamid, 1996). Water temperature as degree centigrade was recorded using a thermometer. The pH value of water was measured using an electric digital pH meter (Jenway Ltd, model 350-pH meter). Dissolved oxygen concentration was determined using an oxygen meter (model d-5509). Data obtained were statistically analyzed according to Sachs (1976).

RESULTS AND DISCUSSION

Table (1) presents the ranges, means \pm standard errors, and coefficients of variance (C.V.) of the measured criteria of the fish rearing water quality, i.e. temperature, pH values, and dissolved oxygen registered

on the 1st of May till the 31st 2010. The after noon values were higher than the morning values for the effect of ambient temperature and consequently for the biotic activities. The C.V. values were small enough because of the homogeneity of the estimated values. These values of water parameters are within the acceptable ranges recommended for pisciculture (Abdelhamid, 1996 and 2009; El-Nady *et al.*, 2001; Abdelhakim *et al.*, 2002; El-Saidy, 2004 and Hassan *et al.*, 2006).

Table (1): Data of fish rearing water as ranges during May – October 2010 at Al-Manzalah lake (Raswah Lisa Al-Gamaliah).

| Item | Temperature, °C | | The pH value | | Dissolved oxygen, mg/l | |
|--------------------|-----------------|-------------|--------------|-------------|------------------------|-------------|
| | Morning | After noon | Morning | After noon | Morning | After noon |
| No. of estimations | 63 | 63 | 63 | 63 | 63 | 63 |
| Range | 23.2 - 26.9 | 24.2 – 28.0 | 6.20 – 7.97 | 7.20 – 8.10 | 5.08 – 7.41 | 7.55 – 8.90 |
| Mean ± SE | 25.5 ± 0.15 | 26.8 ± 0.16 | 6.90 ± 0.05 | 7.72 ± 0.04 | 6.99 ± 0.05 | 8.22 ± 0.07 |
| C. V. % | 3.62 | 4.61 | 5.86 | 3.61 | 5.44 | 3.97 |

C.V. (coefficient of variance) = S x 100 / mean, where S = standard deviation

Table (2) illustrates all collected data of the experimental fish concerning total gains in body weight, length, depth, and condition factor of tilapia [under monoculture (Fig. 1) and polyculture systems at low and high stocking densities (Figs. 3A and 4A, respectively)] and silver carp [under monoculture (Fig. 2) and polyculture systems at low and high stocking densities (Figs. 3B and 4B, respectively)]. Also, comparisons between monoculture and polyculture of either of tilapia or silver carp were given in Figs. (5) and (6), respectively. From the data in these Figs. and Table (2), it is clear that the final body weight of the carp was significantly ($P \leq 0.05$) heavier than that of the tilapia, particularly under the polyculture system at the low stocking density. The same trend was recorded too for final body length, depth, and k-factor as well as for the total bodyweight gain and average daily bodyweight gain, but the total body length and depth and averages of daily body length and depth were higher for tilapia than carp, except for total body length in T₃. However, tilapia reflected higher specific growth rates than carp, particularly under monoculture system or polyculture system at the high stocking density.

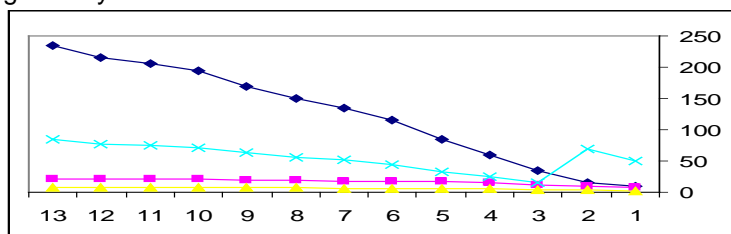


Fig. (1): Body weight (g), condition factor (k), body length (cm), and body depth (cm) curves in descending order (from the upper curve) of the treatment 1 (tilapia, monoculture) throughout the 13-weeks experimental period.

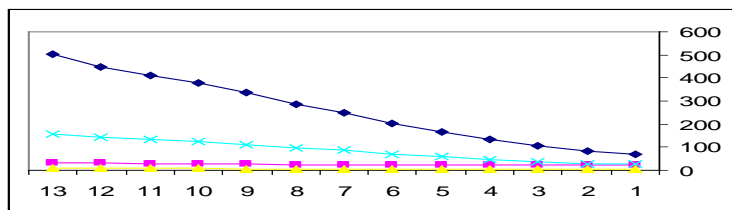


Fig. (2): Body weight (g), condition factor (k), body length (cm), and body depth (cm) in descending order (from the upper curve) of the treatment 2 (silver carp, monoculture) throughout the 13-weeks experimental period.

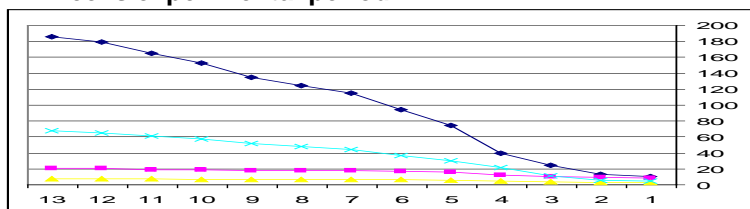


Fig. (3A): Body weight (g), condition factor (k), body length (cm), and body depth (cm) in descending order (from the upper curve) of the treatment 3 (tilapia, polyculture- low density) throughout the 13-weeks experimental period.

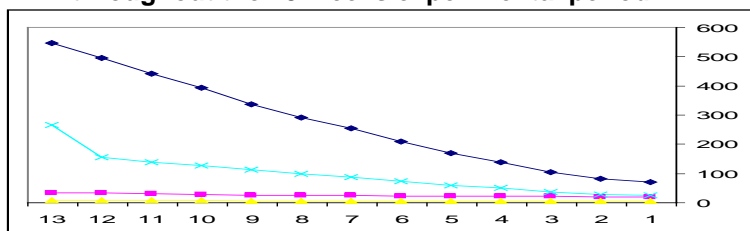


Fig. (3B): Body weight (g), condition factor (k), body length (cm), and body depth (cm) in descending order (from the upper curve) of the treatment 3 (silver carp, polyculture- low density) throughout the 13-weeks experimental period.

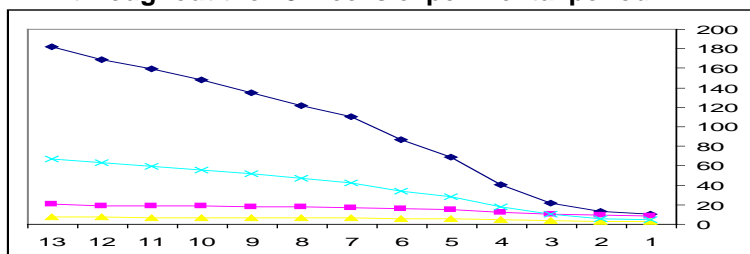


Fig. (4A): Body weight (g), condition factor (k), body length (cm), and body depth (cm) in descending order (from the upper curve) of the treatment 4 (tilapia, polyculture- high density) throughout the 13-weeks experimental period.

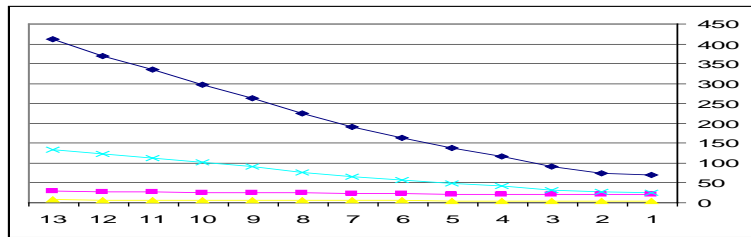


Fig. (4B): Body weight (g), condition factor (k), body length (cm), and body depth (cm) in descending order (from the upper curve) of the treatment 4 (silver carp, polyculture- high density) throughout the 13-weeks experimental period.

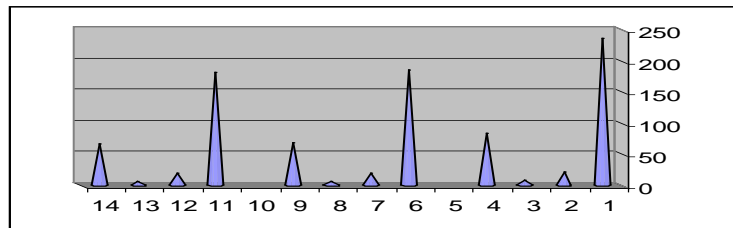


Fig. (5): Comparison between final body measurements (BW, BL, BD, and K-factor) of tilapia under mono (1-4) and polyculture at low (6-9) and high (11-14) stocking densities.

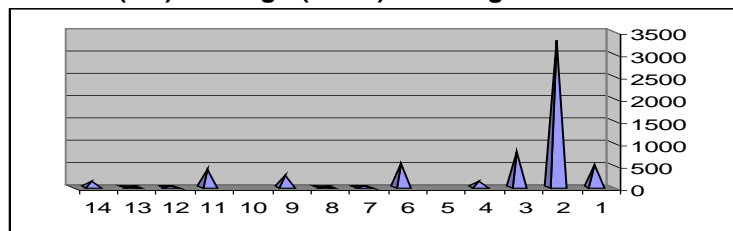


Fig. (6): Comparison between final body measurements (BW, BL, BD, and K-factor) of silver carp under mono (1-4) and polyculture at low (6-9) and high (11-14) stocking densities.

Table (3) presents also a comparison among all the experimental fish groups concerning the catch/ feddan, feed consumption, and feed conversion ratio. The total catch per cage, m³, or feddan was higher for tilapia than for carp for the higher number at stocking as well as for the higher SGR of tilapia than carp. This may be due to that, tilapia consumed more feed than carp, but convert it to growth more efficient than carp, except at T₃ (polyculture, low stocking rate). Table (3) shows also the feed consumption (consequently feed cost) and weight gain per cage which were also higher for tilapia than silver carp, particularly under monoculture than under polyculture, for the same reasons mentioned before (stocking density and growth rate). Feed conversion was the best (2.41) for tilapia monoculture, but was worst (2.66) for silver carp under polyculture at high stocking density (assuming that

both fish species consumed the offered feed at the same feeding rate). The total feed costs and returns per cage were the highest for T₁ followed by T₄, T₃ and at least for T₂. The feed cost/kg gain was at best for T₁ (tilapia, monoculture), followed by silver carp at T₃, tilapia at T₄, tilapia at T₃, silver carp at T₂, and silver carp at T₄. The return and economic efficiency for tilapia were better than for carp, particularly for monoculture than in polyculture. The return and economic efficiency for both species under polyculture were better also at high density than at low density.

Table (2): Summary of the growth performance parameters of intensive fish culture in floating net cages under different rearing systems (mono-and polyculture at different stocking rates).

| Criteria | T ₁ (mono) | | T ₂ (mono) | | T ₃ (poly, low density) | | T ₄ (poly, high density) | |
|------------|-----------------------|--------------------|-----------------------|--------------------|------------------------------------|--------------------|-------------------------------------|--------------------|
| | Tilapia | Silver carp | Tilapia | Silver carp | Tilapia | Silver carp | Tilapia | Silver carp |
| IBW, g | 10 | 70 | 10 | 70 | 10 | 70 | 10 | 70 |
| IBL, cm | 8.4 | 20.8 | 8.4 | 20.8 | 8.4 | 20.8 | 8.4 | 20.8 |
| IBD, cm | 2.8 | 4.6 | 2.8 | 4.6 | 2.8 | 4.6 | 2.8 | 4.6 |
| IK- factor | 4.92 | 25.45 | 4.92 | 25.45 | 4.92 | 25.45 | 4.92 | 25.45 |
| FBW, g | 235 ^b | 505 ^a | 186 ^c | 545 ^a | 182 ^c | 412 ^a | 182 ^c | 412 ^a |
| SGR,%/d | 1.68 ^a | 1.06 ^b | 1.57 ^a | 1.10 ^b | 1.56 ^a | 0.95 ^b | 1.56 ^a | 0.95 ^b |
| FBL, cm | 21.7 ^b | 33.1 ^a | 20.6 ^b | 34.0 ^a | 20.3 ^b | 29.7 ^a | 20.3 ^b | 29.7 ^a |
| FBD, cm | 8.0 ^b | 8.8 ^a | 7.4 ^c | 9.1 ^a | 7.4 ^c | 8.0 ^b | 7.4 ^c | 8.0 ^b |
| FK-factor | 84.3 ^c | 157.3 ^b | 67.9 ^c | 264.8 ^a | 66.7 ^c | 133.0 ^b | 66.7 ^c | 133.0 ^b |
| BWG, g | 225 ^c | 435 ^a | 176 ^d | 475 ^a | 172 ^d | 342 ^b | 172 ^d | 342 ^b |
| BLG, cm | 13.3 ^a | 12.3 ^b | 12.2 ^b | 13.2 ^a | 11.9 ^b | 8.9 ^c | 11.9 ^b | 8.9 ^c |
| BDG, cm | 5.2 ^a | 4.2 ^b | 4.6 ^b | 4.5 ^b | 4.6 ^b | 3.4 ^c | 4.6 ^b | 3.4 ^c |
| DBWG, g | 1.21 ^c | 2.34 ^a | 0.95 ^c | 2.55 ^a | 0.93 ^c | 1.84 ^b | 0.93 ^c | 1.84 ^b |
| DBLG,mm | 0.72 ^a | 0.66 ^b | 0.66 ^b | 0.71 ^a | 0.64 ^b | 0.48 ^c | 0.64 ^b | 0.48 ^c |
| DBDG,m m | 0.28 ^a | 0.23 ^b | 0.25 ^b | 0.24 ^b | 0.25 ^b | 0.18 ^c | 0.25 ^b | 0.18 ^c |

a – d: Means in the same row superscripted with different letters are significantly (P≤0.05) different.

IBW (initial body weight), IBL (initial body length), IBD (initial body depth), IK- factor (initial condition factor), FBW (final BW), FBL (final BL), FBD (final BD), FK-factor (final K-factor), BWG (bodyweight gain), BLG (body length gain), BDG (body depth gain), DBWG (average daily BWG), DBLG (average daily BLG), and DBDG (average daily BDG).

Nour *et al.* (1993) registered that growth performance, fish net production and feed utilization of grey mullet was decreased with increasing the stocking density. Moreover, Sweilum (1995) found that the growth in length and weight of the two rearing fishes (Nile tilapia and silver carp) slightly increased with the decreasing stocking density. Additionally, Khouraiba *et al.* (1996) concluded that growth performance and feed efficiency of *Penaeus japonicus* shrimp were significantly decreased with increasing the stocking density. In addition, Teichert-Coddington (1996) came to the conclusion that total production increased curvilinear but feed conversion ratios, total nitrogen and chlorophyll α decreased linearly as the rate of stocking tilapia increased. He found also that tilapia mean weight decreased curvilinear and tambaqui (*Colossoma macropomum*) mean weight increased linearly as the rate of stocking tilapia increased. Also, Huang and Chin (1997) mentioned that the size, size variation, percentage survival and production of tilapia fry were found to be significantly affected by stocking

density, but not for condition factor. Moreover, Sweilum (1998-a) reported that growth and production of *O. niloticus* are related to stocking density, since they increase at low density. El-Sherif (2001) also found improvements in weight and length of the prawn larvae at lower stocking density.

Table (3): Data of fish production and economic efficiency of intensive fish culture in floating net cages under different rearing systems (mono-and polyculture at different stocking rates).

| Criteria | T ₁ (mono) | T ₂ (mono) | T ₃ (poly, low density) | | T ₄ (poly, high density) | |
|---------------------------------|-----------------------|-----------------------|------------------------------------|-------------|-------------------------------------|-------------|
| | Tilapia | Silver carp | Tilapia | Silver carp | Tilapia | Silver carp |
| Catch, kg: | | | | | | |
| /cage | 2350 | 757.5 | 930 | 408.8 | 1365 | 453.2 |
| /m ³ | 7.83 | 2.53 | 3.10 | 1.36 | 4.55 | 1.51 |
| /feddan | 98700 | 31815 | 39060 | 17167.5 | 57330 | 19034.4 |
| Feed | | | | | | |
| consumptio,kg/cage | 5421 | 1677 | 2201.6 | 874.2 | 3174 | 1001.8 |
| Gain, kg/cage | 2250 | 652.5 | 880 | 356.25 | 1290 | 376.2 |
| FCR | 2.41 | 2.57 | 2.50 | 2.45 | 2.46 | 2.66 |
| Feed cost, LE: | | | | | | |
| /cage | 13010.4 | 4024.8 | 5283.8 | 2098.1 | 7617.6 | 2404.3 |
| /Kg BW gain | 5.78 | 6.17 | 6.00 | 5.89 | 5.91 | 6.39 |
| Return, LE: | | | | | | |
| /cage | 18800 | 2840.6 | 6324.0 | 1635.0 | 9282.0 | 1586.2 |
| /m ³ | 62.67 | 9.47 | 21.08 | 5.45 | 30.94 | 5.29 |
| /feddan* | 789600 | 119305 | 265608 | 68670 | 389844 | 66620.4 |
| Economic efficiency**(%) | 144.5 | 70.58 | 119.7 | 77.9 | 121.8 | 65.97 |

FCR (Feed conversion ratio), * : Feddan (Egyptian area unit) = 4200m²,

** : Economic efficiency (return x 100/ feed cost), according to the local prices year 2010 for fish and feed, where 1 US dollar (\$) = 5.8051 Egyptian pound (L.E.).

Also, El-Saidy and Gaber (2002) confirmed that mean final weight and length, weight and length gain, SGR, and feed conversion of *O. niloticus* were significantly ($P \leq 0.01$) the best at the lower stocking density; while, total production and net production exhibited significantly the opposite trend. Bakeer *et al.* (2003) revealed too that silver carp cultured in cages gave pronounced ($P \leq 0.05$) increases in body weights at lower stocking density. Additionally, Kheir and Saad (2003) proved that the least stocking rate attained the highest significant ($P \leq 0.05$) final weight, weight gain, SGR, feed conversion, and protein efficiency ratio for *O. niloticus*. Abdel-Aal *et al.* (2004) working on *O. niloticus*, revealed that while individual fish weight and dressing percentage as well as flesh percentage decreased, fish yield and money profit increased with the increase in fish stocking density. However, El-Saidy (2004) revealed no significant differences in average final weight and SGR between stocking rates, but mean biomass at harvesting, total weight gain, daily weight gain and survival rate differ significantly ($P \leq 0.05$). The best fish growth, production and profitability were achieved from the highest stocking rate. Mullet growth was the best under the low density, but Nile tilapia grow better under the highest density. Additionally, Abou Zied *et al.* (2005) also revealed that harvesting body weight, total gain, daily gain and

SGR of fish were affected by stocking rates, where higher values for tilapia and mullet were obtained at lower densities. Yet, body mass of tilapia at harvesting and the net production per feddan were higher at the highest stocking rate. Since, Abdel-Tawwab *et al.* (2005) concluded that Nile tilapia may quickly adapted to high rearing density by enhancing feed quality especially protein level in the diet to prevent the deleterious effect in fish farm. Recently, Bakeer *et al.* (2006) concluded also that stocking density released significant effects on final body weight and survival in favor of lower stocking density. Hassan *et al.* (2006) noticed also that increasing the stocking density decreased significantly body weight and length of tilapia aurea. Yet, Bakeer *et al.* (2007) recommended the medium stocking density [12 *O. niloticus* fish (50 g initial weight)/m³] to get the optimum marketable fish size at harvest under monoculture semi-intensive system. Lastly, Alam (2009) concluded that the highest stocking density [150 fish (2.8 g initial weight)/m³] of monosex male Nile tilapia reared in concrete tanks exhibited the highest production and net profit.

Gonzales-Corre (1988) used mono- and polyculture at different stocking densities and found that a competition was evident between *P. monodon* and *O. niloticus* at a stocking combination of 6,000 *P. monodon* /hectar plus 6,000 *O. niloticus* / hectar. Total yield from polyculture was better than monoculture. Polyculture of *P. monodon* at 6,000/ha and *O. niloticus* at 4,000/ha appeared feasible. However, Khouriba *et al.* (1991) showed that common carp can be cultured with Nile tilapia in cages without affecting the growth and net production of Nile tilapia at ratios of 1:10 and 2:10 for tilapia and carp, respectively, 21:10 is the optimum ratio. They added that polyculture system gave higher (30%) total net production than that of tilapia alone in a monoculture. On the other hand, Brummett and Alon (1994) concluded that tilapia growth, reproduction and food conversion were adversely affected by the presence of crayfish ($P \leq 0.01$). Sweilum (1998-b) noticed also that the silver carp was the best species in tilapia rearing ponds, with it the weight gain of *O. niloticus* reached its maximum value. The specific growth rate was 1.91 for Nile tilapia reared with silver carp, 1.56 with common carp, 1.43 with the two species of carp and 1.24 for the Nile tilapia reared alone in the pond. On the other hand, the total production of *O. niloticus* was 1.806 Kg in the pond contained silver carp and 1.479 kg in pond contained common carp. This is a result of the observation that the optimum value of feed conversion (2.65) occurred for tilapia reared with silver carp. However, Abdelhakim *et al.* (2001) concluded that tilapia, mullet and eel can be cultured together in earthen ponds. Sweilum (2001) obtained better growth rate and production for *O. niloticus* in polyculture combination (Nile tilapia, *Sarotherodon galilaeus* and *Clarias gariepinus*) than in duoculture and monoculture systems. He added that *O. niloticus* showed better growth rate when cultured with *C. gariepinus* than with *S. galilaeus*. Yet, Kheir *et al.* (2002) reported no significant difference for growth performance among fish or prawn alone or in polyculture. Such a result may indicate that the growth of both species was not affected by the presence of the other. The feed conversion ratio was lower in polyculture than in the monoculture indicating that the polyculture species consumed less feed and utilized the feed more

efficiently than the monoculture ones. Additionally, Saad and Habashy (2002) cultured the exotic crayfish (*Procambarus clarkia*, Girard, 1852) with common carp (*Cyprinus carpio*, Linnaeus, 1758); silver carp (*Hypophthalmichthys molitrix*, Valenciennes, 1844); Nile tilapia (*Oreochromis niloticus*, Linnaeus, 1757); and *Sartherodon galilaeus* (Artemi, 1757). There were no significant differences in the survival rate of the four fish species cultured in combination with the crayfish and the fish kept alone. Also, there were no significant differences in weight gain and specific growth rate. However, El-Saidy (2004) concluded that the semi-intensive polyculture of mullet and Nile tilapia is advised to increasing fish production and overcome the problems of land and water shortage. Also, Kheir and Saad (2004) found that the stocking rate of 4:1 *O. niloticus* : *C. gariepinus* produced higher growth, better FCR and higher production of marketable tilapia and catfish, indicating the absence of interspecies competition. So, it may be concluded that 4:1 *O. niloticus* : *C. gariepinus* stocking ratio is sufficient for effective recruitment control of tilapia and achieving higher growth and production of the two species. However, Kheir *et al.* (2004) recommended that rearing of males and females separately is necessary for increasing *O. niloticus* fingerlings growth and production in fish cage farms. De Silva *et al.* (2008) concluded that the introduction of *Jundia Rhamdia quelen* (Quoy & Gaimard) and Nile tilapia to carp in polyculture had a positive effect on all growth parameters when compared with carp only. The reduction in common carp ratio also had a positive effect on all growth and yield parameters. Moreover, Essa *et al.* (2008) revealed that Nile tilapia and silver carp culture in net-enclosures model was more productive (12.26 kg/m³/5 months) and economic than monoculture of Nile tilapia model (5.77 kg/m³/ 5 months).

CONCLUSION

From the obtained results, it could be concluded and recommended that the best treatment is the monoculture of all males monosex Nile tilapia followed by that of polyculture for their superiority in final bodyweight, bodyweight gain, average daily bodyweight gain, specific growth rate, feed conversion, feed cost/Kg bodyweight gain, economic efficiency, and return.

REFERENCES

- Abdel-Aal, M. M.; Hassan, A. A. and Mahmoud, A. A. (2004). Effect of stocking density on growth performance and body composition of Nile tilapia (*Oreochromis niloticus*) in rice fields. Proc. The 1st Inter. Conf. Vet. Res. Div., Nrc, Cairo, Egypt, Feb. 15-16th, pp: 384-392.
- Abdelhakim, N.F., Baker, M.N. and Soltan, M.A. (2001). Effect of dietary protein levels on growth performance and pond productivity of Nile tilapia (*Oreochromis niloticus*), eel (*Anguilla anguilla*) and grey mullet (*Mugil cephalus*) reared in polyculture system. Egypt. J. Aquat. Biol. & Fish., 5 (4): 61-85.

Abdelhamid, A. M.

- Abdelhakim, N.F., Baker, M.N. and Soltan, M.A. (2002). Aquatic Environment for Fish culture. Cairo, (ISBN: 977 – 298 – 228 – 5).
- Abdelhamid, A.M. (1996). Field and Laboratorial Analysis in Animal Production. Dar Annashr for Universities, Cairo, I.S.B.N. 977–5526–47–7, 680 p.
- Abdelhamid, A.M. (2009). Modern Approach in Aquaculture. New Universal Office, Alexandria, I.S.B.N. 977–438–053–3, 393 p.
- Abdel-Tawwab, M.; Mousa, M. A. A., Sharaf, S. M. and Ahmad, M. H. (2005). Effect of crowding stress on some physiological functions of Nile tilapia, *Oreochromis niloticus* (L.) at different dietary protein levels. International Journal of Zoological Research, 1 (1): 41-47.
- Abo-El-Wafa, M. A. (1996). An experiment for scientific management of fish cage culture in Dakahlia and Damietta governorates. Menofiya J. Agric. Res., 21 (3): 783-794.
- Abou Zied, R. M. and Hassouna, M. M. E. (2006). Evaluation of net enclosures systems on sex reversed Nile tilapia, *Oreochromis niloticus*, fry production at a commercial hatchery in Fayoum governorate. Fayoum J. Agric. Res. & Dev., 20 (1): 162- 171.
- Abou Zied, R. M.; Abd El-Maksoud, A. M. S. and Ali, A. A. A. (2005). Effect of stocking rates of Nile tilapia (*Oreochromis niloticus* L.) and grey mullet (*Mugil cephalus* L.) on their performance in polyculture earthen ponds. Annals of Agric. Sc., Moshtohor, 43 (3): 1057-1066.
- Alam, A. A. E. (2009). Effect of feeding frequency and stocking density on the performance of mono-sex Nile tilapia in concrete ponds. M. Sc. Thesis, Fac. of Agric., Minufiya Univ.
- Bakeer, M. N.; Abdel-Gawad, A. S., Abdel-Rahman, S. and Nossier, M. I. (2003). Biological and economical investigations of silver carp (*Hypophthalmichthys molitrix*) cultured in cages at different stocking densities and manuring treatments. Intern. Conf. "Fish Wealth and Food Security in Arabic and Islamic Countries", 22-24 Oct., Al-Azhar Univ., 19p.
- Bakeer, M. N.; Mahmoud, A. A., Radwan, M. I. and Hassan, A. A. (2006). Growth performance and survival of Nile tilapia deeds (*Oreochromis niloticus*) reared in concrete tanks during winter season under different stocking densities. J. Agric. Sci. Mansoura Univ., 31 (5): 2719-2731.
- Bakeer, M. N.; Mostafa, M. A. A. and Higaze, A. Z. (2007). Effect of fish size and density at initial stocking on growth performance and fish marketable size. J. Agric. Sci. Mansoura Univ., 32 (3): 1803-1813.
- Brummett, R. E. and Alon, N. C. (1994). Polyculture of Nile tilapia (*Oreochromis niloticus*) and Australian red claw crayfish (*Cherax quadricarinatus*) in earthen ponds. Aquaculture, 122: 47-54.
- Coulibaly, A.; Ouattara, I. N. Koné, T. N'Douba, V. Snoeks, J. Gooré Bi, G. and Kouamélan, E. P. (2007). First results of floating cage culture of the African catfish *Heterobranchus longifilis* Valenciennes, 1840: Effect of stocking density on survival and growth rates. Aquaculture, 263:61-67.

- De Silva, L. B.; Barcellos, L. J. G., Quevedo, R. M., De Souza, S. M. G., Kessler, A. D., Kreutz, L. C., Ritter, F., Finco, J. A. And Bedin, A. C. (2008). Introduction of Jundia *Rhamdia quelen* (Quoy & Gaimard) and Nile tilapia *Oreochromis niloticus* (Linnaeus) increases the productivity of carp polyculture in southern Brazil. *Aquaculture Research*, 39: 542-551.
- El-Nady, M. A.; Kamar, M. G., Hafez, F. A. And Abu-Seif, R. A. (2001). Effect of different husbandry methods on water quality and growth of some freshwater fishes. *Egypt. J. Aquat. Biol. & Fish.*, 5 (4): 295-318.
- El-Saidy, D. M. S. D. (2004). Growth, production and economic profitability of Nile tilapia and mullets in semi-intensive polyculture systems under Egyptian fish farm conditions. *Proc. The 1st Inter. Conf. on the Exportable Trends for Egyptian Fish.* May 11-12, Ain Shams Univ.,Cairo,pp:156-169.
- El-Saidy, D. M. S. D. (2005). Growth performance and feed utilization of mono-sex (male or female) and normal mixed sex Nile tilapia, *Oreochromis niloticus* (L.) cultured in tanks. *Minufiy J.Agric. Res.*, 30 (3):877-889.
- El-Saidy, D. M. S. D. and Gaber, M. M. A. (2002). Intensive culture of Nile tilapia, *Oreochromis niloticus* in concrete tanks in Egypt: Effect of stocking density and feeding levels on growth performance, production traits, feed conversion and body composition. *Proc. 1st Sci. Conf. Aqu.*, El-Arish,13-15Dec.pp:1-22.
- El-Sherif, M. S. (2001). Studies on growth performance of prawn (*Macrobrachium rosenbergii*) as affected with type of feeding and stocking density. *J. Agric. Sci. Mansoura Univ.*, 26 (7): 4177-4185.
- Essa, M. A.; Goda, A. M. A. S., Hanafy, M. A., El-Shebly, A. A., Mohamed, R. A. and El-Ebiary, E. H. (2008). Small-scale fish culture: guiding models of aquaponics and net-enclosures fish farming in Egypt. *Egyptian Journal of Aquatic Research*, 34 (3): 320-337.
- Frankic, A. and Hershner, C. (2003). Sustainable aquaculture: developing the promise of aquaculture. *Aquaculture International*, 11: 517-530.
- Gonzales-Corre, K. (1988). Polyculture of tiger shrimp (*Penaeus monodon*) with Nile tilapia (*Oreochromis niloticus*) in brackishwater fishponds. *Proc. The 2nd Inter. Symp. on Tilapia in Aquaculture. ICLARM Conf. Proc.*, pp:15-20.
- Hassan, A. S.; Hassan, A. A. and Mahmoud, S. H. (2006). Effect of stocking rate and organic fertilization on the growth performance of tilapia aurea (*Oreochromis aureus*). *J. Agric. Sci. Mansoura Univ.*, 31 (2): 617-625.
- Huang, W. B. and Chin, T. S. (1997). Effect of stocking density on survival, growth, size variation, and production of tilapia fry. *Aquaculture Research*, 28: 165-173.
- Kheir, M. T. and Saad, A. S. (2003). Growth performance and feed utilization of *Oreochromis niloticus* (Linnaeus, 1757) fingerlings as affected with stocking density and feeding regime. *J. Egypt. Acad. Soc. Environ. Develop.*, (B-Aquaculture), 4 (2): 1-21.

- Kheir, M. T. and Saad, A. S. (2004). Recruitment control of *Oreochromis niloticus* (Linnaeus, 1757) with *Clarias gariepinus* (Burchell, 1822) in a polyculture system. J. Egypt. Ger. Soc. Zool., 45B: Vertebrate Anatomy & Embryology, 53-65.
- Kheir, M. T.; Habashy, M. M. and Saad, A. S. (2002). Observations on growth and survival of silver carp *Hypophthalmichthys molitrix* and juveniles of freshwater prawn *Macrobrachium rosenbergh* in monoculture and polyculture systems. J. Egypt. Acad. Soc. Environ. Develop., (B-Aquaculture) 2 (1): 17-27.
- Kheir, M. T.; Mechaieil, M. M. and Saad, A. S. (2004). Rearing of males and females *Oreochromis niloticus* L. fingerlings separately and mixed in floating cages. J. Egypt. Acad. Soc. Environ. Develop., (B-Aquaculture),5(1):55-66.
- Khouraiba, H. M.; El-Sherif, M. S. and Al-Farsi, E. M. (1996). Effect of stocking density and dietary protein level on growth performance and feed utilization of shrimp, *Penaeus japonicus* juvenile, in nursery system. Egypt. J. Appl. Sci., 11 (11): 262-284.
- Khouraiba, H. M.; El-Sherif, M. S. and Dansoury, M. A. K. (1991). Enhanced fish production through polyculture system of Nile tilapia (*Tilapia nilotica*) with common carp (*Cyprinus carpio*) in floating cages. Zagazig Vet. J., 19 (4): 854-864.
- Nour, A.; Mabrouk, H., Omar, E., Abo El Wafa, M. And Abou Akkada, A. (1993). Effect of feeding levels and stocking densities on growth performance and feed utilization of grey mullet (*Mugil cephalus*). Proceedings of Aquaculture Symposium "Technology and Investment Opportunities", 11-14 April, Riyadh, Saudi Arabia, pp: 550-559.
- Saad, A. S. and Habashy, M. M. (2002). Survival and growth rates of early stages of some fish species reared with the freshwater crayfish, *Procambarus clarkii* (Girard, 1852). Egypt. J. Aquat. Biol. & Fish.,6(3):163-180.
- Sachs, L. (1976). Statistische Methoden, Ein Soforthelfer. 3. Neubearbeitete Auflage. Springer – Verlag. Berlin, Heidelberg, New York.
- Sweilum, M. A. (1995). Studies on rearing of some available species of carp and tilapia in ponds. Ph.D. Thesis, Faculty of Science, Benha University.
- Sweilum, M. A. (1998-a). Observations on growth and production of *Oreochromis niloticus* reared in floating cages. Bull. Fac. Sci., Zagazig Univ., 20 (1): 224-238.
- Sweilum, M. A. (1998-b). Comparison of silver carp and common carp usefulness as additional fish in tilapia rearing ponds. Bull. Fac. Sci., Zagazig Univ., 20 (2): 288-299.
- Sweilum, M. A. (2001). Growth performance and production of *Oreochromis niloticus* using polyculture systems and fertilizers. Egypt. J. Aquat. Biol. & Fish., 5 (2): 105-119.
- Teichert-Coddington, D. R. (1996). Effect of stocking ratio on semi-intensive polyculture of *Colossoma macropomum* and *Oreochromis niloticus* in Honduras, Central America. Aquaculture, 143: 291-302.

الرعاية المكثفة للبلطي النيلي وحيد الجنس والمبروك الفضي بنظامي منفرد ومتعدد الأنواع على كثافات تخزين مختلفة في أقفاص عائمة شبكية
عبد الحميد محمد عبد الحميد
قسم إنتاج الحيوان، كلية الزراعة، جامعة المنصورة، ج.م.ع.

تم إجراء تجربة لرعاية أسماك البلطي النيلي وحيد الجنس ذكور (10 جم) وأسماك المبروك الفضي (70 جم) في أقفاص شبكية عائمة (10 X 10 X 3م) لمدة ستة أشهر بنظام وحيد النوع أو نظام متعدد الأنواع (على كثافتين تخزين)، وثبت من النتائج المتحصل عليها تفوق المعاملة التي بها البلطي منفردا، يليها التي بها البلطي مع المبروك (بكثافة 5000 + 750 سمكة، على الترتيب في القفص)، وذلك لتفوقهما على باقي المعاملات من حيث الوزن النهائي (235 و 545 جم/سمكة)، الزيادة في وزن الجسم (225 و 475 جم/سمكة)، الزيادة اليومية في وزن الجسم (1.21 و 2.55 جم)، معدل النمو النوعي (1.70 و 1.10 %/يوم)، معدل التحويل الغذائي (2.41 و 2.45)، تكاليف التغذية/كجم زيادة في وزن الجسم (7.78 و 5.89 جنية)، الكفاءة الاقتصادية (144.5 و 77.9%)، كما تفوقت معاملة البلطي المنفرد يليها معاملة البلطي مع المبروك (بكثافة 7500 + 1100 سمكة على الترتيب/قفص) على باقي المعاملات من حيث العائد على القفص (18855 و 10868 جنية)، وعليه يوصى بالتربية المنفردة للبلطي النيلي وحيد الجنس ذكور أو البلطي مع المبروك الفضي بكثافة عالية كالمستخدمة في هذا البحث.

قام بتحكيم البحث

كلية الزراعة – جامعة المنصورة
كلية الزراعة – جامعة كفر الشيخ

أ.د / عبد الخالق السيد عبد الخالق
أ.د / فوزى ابراهيم معجوز